



## FOR LEASE

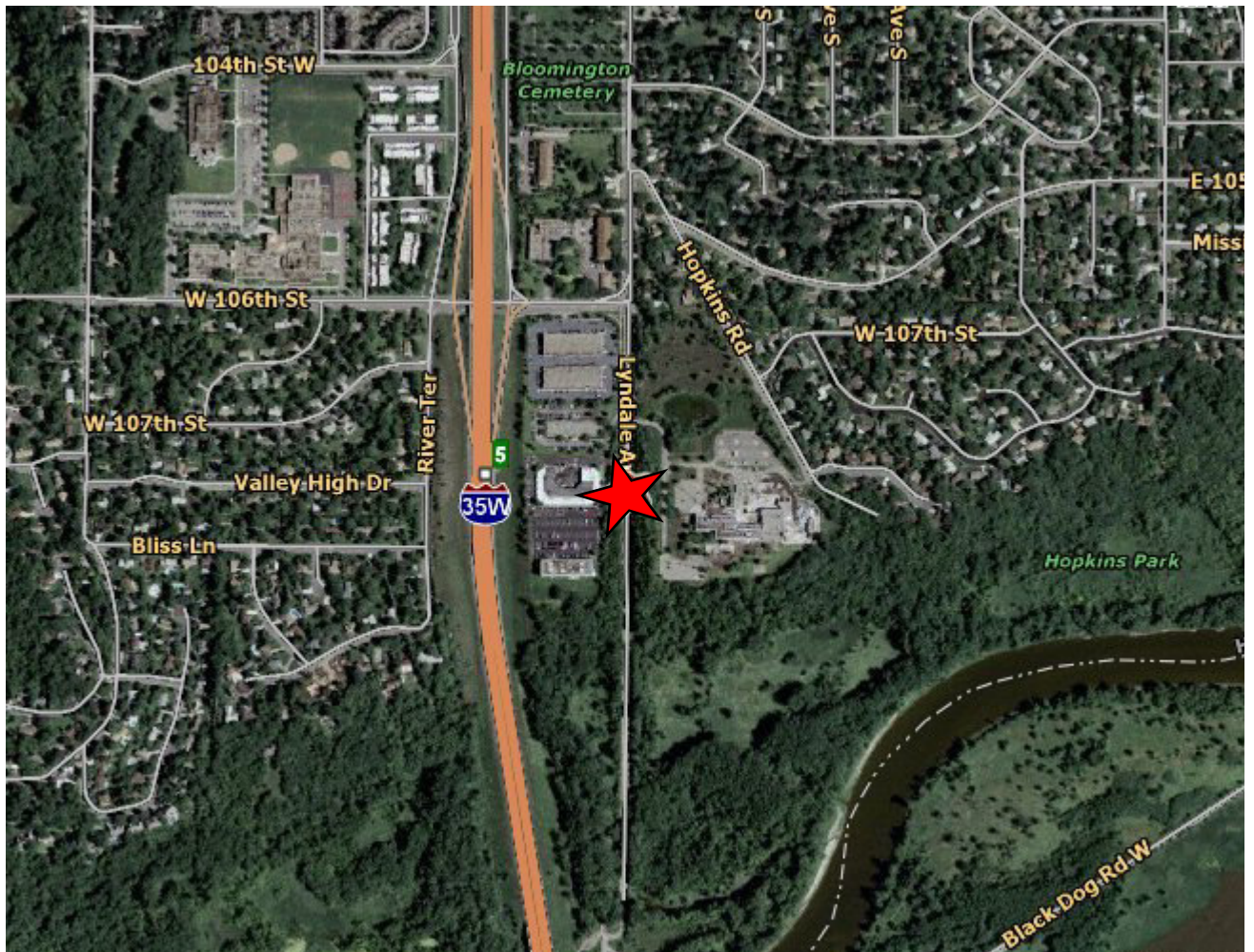
# 10740 LYNDALÉ PROPERTIES



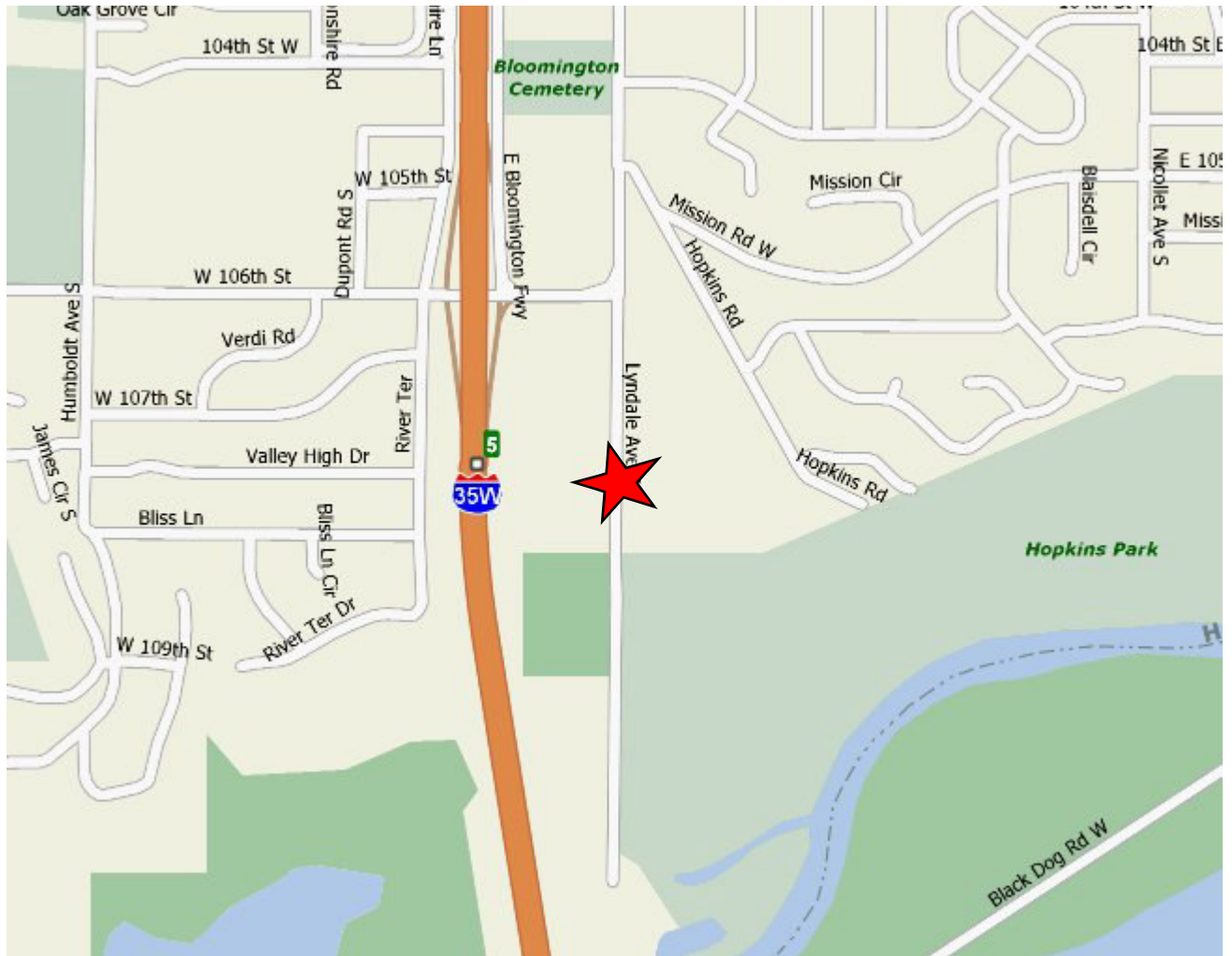
- ✓ Great Freeway Frontage on 35W & 106th Street
- ✓ Free High Speed Wireless Internet
- ✓ Dock Doors & Drive-In Doors
- ✓ 18' Ceiling Height
- ✓ Built in 1980



For more information contact:  
Eli Russell 612.290.1037



**JGM Properties Incorporated**  
1224 West 96th Street, Bloomington, Minnesota 55431  
Phone: 952.884.8088 Fax: 952.884.7645  
[www.jgmproperties.com](http://www.jgmproperties.com)



**JGM Properties Incorporated**  
1224 West 96th Street, Bloomington, Minnesota 55431  
Phone: 952.884.8088 Fax: 952.884.7645  
[www.jgmproperties.com](http://www.jgmproperties.com)